

SonoScape



S8

An Ever-higher Standard
and State-of-the-art Luxury

www.sonoscape.com

SonoScape

9/F,Yizhe Building,Yuquan Road Shenzhen,518051,China
Tel:86-755-26722860 Fax:86-755-26722850
E-mail:sonoscape@sonoscape.net Http://www.sonoscape.com



CE 0434

2008 FROST & SULLIVAN
Entrepreneurial Company Award



ISO 13485

State-of-the-art Technology Luxury:

HQNF Technology:

Efficiently Reducing Doppler Noise and Improving Doppler Images and Color Flow.

Real-Time Matching Technology:

Smoothing of Genuine Images.

Multi-Beam Parallel Processing Technology:

Upgrading Imaging Velocity and Improving the Facility and Real-Timing of Images.

M-Tuning Technology:

Identifying Different Tissue and Automatically Choosing the Optimized Parameters for Achieving the Best Images According to Different Patients.

Panoramic Imaging:

Ultra-wide Sight Promises a Clear Vision and Maximum of Information on Tissue and Lesions.

Super High-density Ultrasound Transducers Technology:

Achieving Uniform Spatial and Contrast Resolution and Penetration in Both Near and Far Field.

Micro-Scan Technology:

Allowing the Transducers to See in More Than One Direction to Eliminate Artifacts by Viewing the Same Thing from a Different Angle.

SonoScape



Powerful Lightweight Like Nothing Else

The S8 is designed by our genius engineers in a very lightweight but powerful architecture. Whether at a patient's bedside or a mobile exam site, this S8 makes it very easy for you to go anywhere.





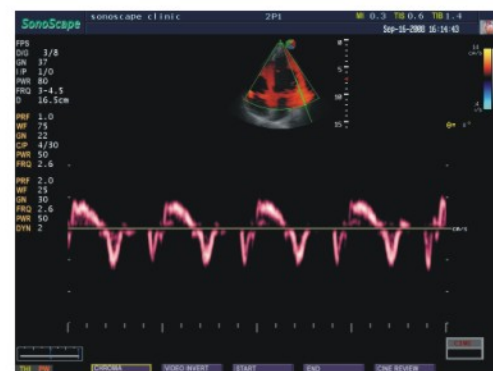
The S8 is a full-featured hand-carried unit from SonoScape, designed in a new powerful lightweight architecture for meeting all your high performance application requirements, from volumetric 4D with superior rendering capabilities, to cardiovascular exams including adult and pediatric multiplane transesophageal echocardiography (TEE), etc. With the superior imaging and ease-of-use performance typically available only in the very high end mobile big systems, this system is built to deliver outstanding value for our customers worldwide.

Cutting-edge Features

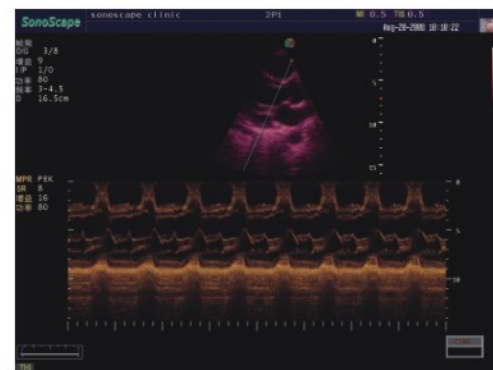
- + 2D with Harmonic Imaging
- + CFM, PDI, PW, CW
- + Volumetric 4D Imaging
- + Tissue Doppler Imaging
- + Steering M mode
- + Hot key function
- + Bi-plane transrectal
- + Multi-plane Adult and Pediatric TEE
- + Panoramic Imaging
- + Endocavitary Imaging with Extended Field-of-View
- + Hot swap



Real time 4D



TDI



Steer M



Hepatic Vein

The Multi-specialty High Performance Imaging

SonoScape has been focusing on what's the most important thing for an ultrasound system, the imaging quality, and successfully develop this S8 to allow you to achieve crystal clear images with greater accuracy for your confident diagnosis on a very wide variety of patients.



Directional DPI



Ovary



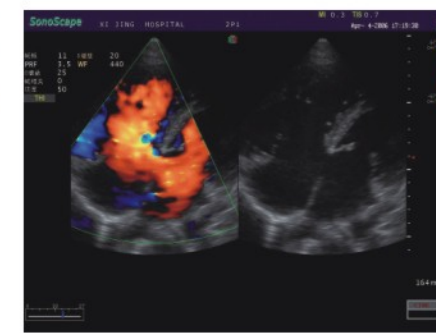
Umbilical Flow



MV Flow



popliteal vein in PW Doppler



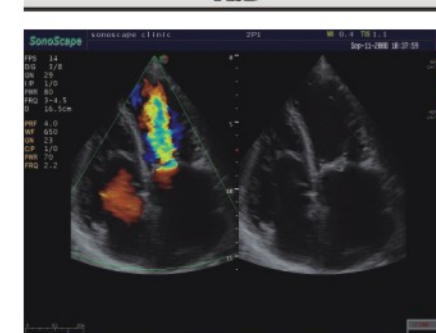
ASD



TEE



MR CW



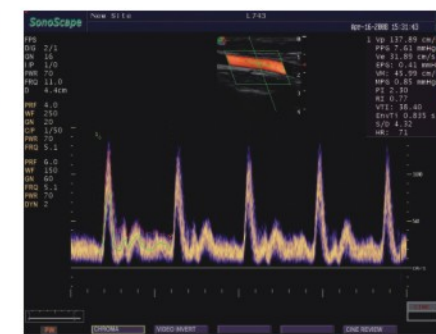
MS



Face



Cord Entanglement



CCA in PW Doppler

